

# *Seventh Annual* **PRIVATE TREATY OFFERING**

**Selling 9 Purebred Registered Gelbvieh Bulls**



**Duane, Rhonda, Kristyne, Jordan, & Brooke Thull**  
Rhonda - 605.860.1237 • Jordan - 605.620.0023

**[www.thullgelbviefarm.com](http://www.thullgelbviefarm.com)**

**THULL GELBVIEH**  
**FARM**



# THULL GELBVIEH FARM

Thull Gelbvieh Farm is focused on providing quality genetics to enhance the future of the beef industry. Established in 2001, Duane and Rhonda purchased the first six purebred Gelbvieh cows from Hojer Gelbvieh Ranch. Since then our herd has expanded to over 100 head of purebred registered Gelbvieh cows. We're a family operation and when we say that...we mean it. From selecting the genetics to record keeping to daily chores and photographing the bulls for our catalog, each of us are involved in the operation to bring you the quality genetics to fit your operation's needs. So with that, let's do some introductions!

---

## HEALTH & BREEDING SOUNDNESS

All bulls have had 2 rounds of Bovi-Shield Gold One Shot, 2 rounds of Ultrabac 7/Somubac, poured for lice and worms.

All bulls will be semen tested and scrotal measured.

## TERMS OF SALE:

All animals sell according to the recommended terms of the AGA. Thull Gelbvieh is retaining 1/3 semen interest in all bulls selling unless stated otherwise in the catalog. Settlement is to be made the day of the sale. Each animal becomes the buyers risk as soon as sold.

## VIDEOS

Videos of each bull can be located on our website: [www.thullgelbviehfarm.com](http://www.thullgelbviehfarm.com)

## LIABILITY

Thull Gelbvieh is not responsible for any accidents.

## DELIVERY

Free delivery of bulls within 100 miles. Arrangements can be made to meet at a central location outside of that area at a shared cost.

Thull Gelbvieh will keep and feed the bulls **FREE** of charge until April 15, 2024.





Join Us!

# OPEN HOUSE

**FEBRUARY 3, 2024 • 11AM - 2PM**

**44327 215th St • Oldham, SD 57051**

Join us at our farm for lunch and an opportunity to see our operation and the bulls first hand!

## ..... NEW SALE FORMAT .....

This is a private-treaty phone or in person bid-off at the open house. Each bull is assigned a base price. The sale process opens when the catalog is published and closes at 2PM on February 3rd, 2024 at the open house. Call / text Jordan at 605-620-0023 to schedule a viewing appointment or place your name on a bull of interest on or before 2PM on February 3rd. If more than one party places a name on a bull by 2PM, parties will be contacted for the bid-off. Bidding will take place in \$100 increments. If only one party's name is on a bull, the bull is purchased at base price. Any remaining bulls are available via private treaty after the open house.

REG: AMGV1568123

DOB: 1/15/2023

HOMO BLACK • HOMO POLLED • PUREBRED

## L325 OLYMPUS



L325 is a great way to start out the bull lineup this year! First thing you will notice when you walk into the pen is this massive bull who has so much muscle and length, you're going to fall in love instantly! He is the 2nd highest growth bull in this pen and we know that will translate to your calves at weaning time! Once you dive a little deeper into this bull, you will see that his pedigree on the dam side is impressive! His dam is a 5-year-old cow that already has been awarded DAM OF MERIT!! She has now had 3 bulls that have been sold on our sale the past three years...talk about consistency! L325 is definitely everything you want in your next herd sire! **HOMO BLACK!! HOMO POLLED!!** Adj YW: 1315! Adj WW: 767

**KHR 01E**

DBRG TWISTER 451B  
KHR 501C

BW	ADJ WW	ADJ YW	WDA
90	767	1315	3.58

**THUL G912**

POST ROCK ASTRONAUT 157A  
THUL X108

CED	BW	WW	YW	MK	TM	CEM	CW	REA	MARB	FPI
10	0.7	73	101	25	62	6	21	.56	.27	77.91



REG: AMGV1568036  
 DOB: 2/1/2023  
 BLACK • POLLED • PUREBRED

# L358 DENALI



This bull right here is a special one to us! We thought long and hard about not letting L358 leave our farm but have decided to give you the opportunity to add him as a herd sire prospect for your operation. When you look at L358, you will instantly see the depth of body he carries while also having the muscle and performance to make him one of the better well-rounded bulls in the pen! He also has a very impressive pedigree as his Grand Dam was awarded "DAM OF DESTINATION" this year!! Be sure to find this guy in the pen, as you won't want to miss your chance at him!  
**Adj WW: 797! Top 15% MB! Top 15% WW! Top 10% MILK!**

**CCCJ JAMESON**

CCCJ CCC CHESTER 515C  
 CCCJ 6123D

BW	ADJ WW	ADJ YW	WDA
90	797	1260	3.40

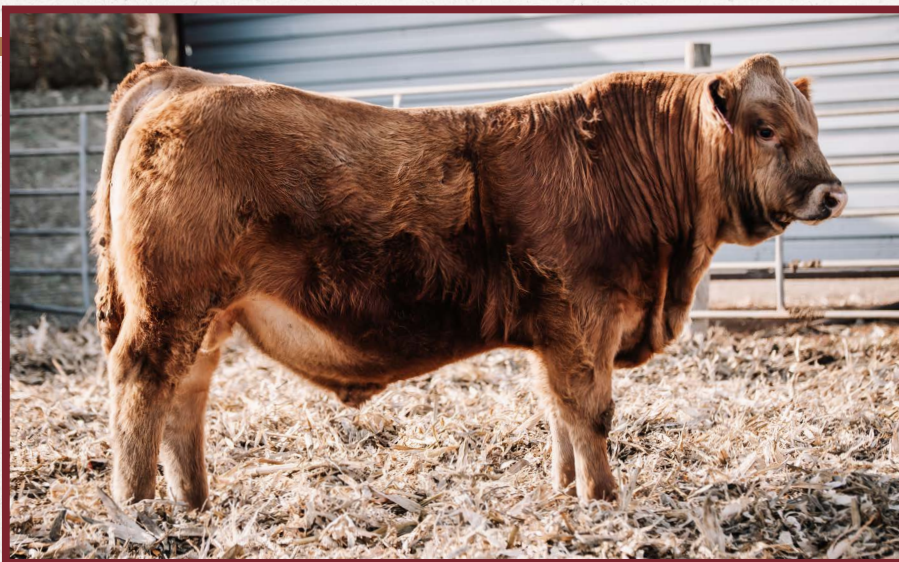
**VDH H060**

DDGR POWERPLAY 143A  
 VDH Z222

CED	BW	WW	YW	MK	TM	CEM	CW	REA	MARB	FPI
11	0.5	79	110	29	68	5	24	.58	.33	83.79

REG: AMGV1568146  
 DOB: 2/1/2023  
 RED • HOMO POLLED • PUREBRED

# L356 RUSHMORE



Muscle, Power, Performance, Pedigree are four words that describe this bull perfectly! L356 is one of the widest top, deep made bulls in this year's line up! I, personally, have watched this bull all year and there was never a doubt in my mind that this guy wasn't going to make it to sale day. In all seriousness, if "Rushmore" was out of a different dam he probably wouldn't be leaving our operation. His dam, "JTHU E729", has produced some of the top gaining bulls in the pen the last two years. Talk about consistency!! E729 has also been awarded "DAM OF MERIT"!! So, if you are looking for a red bull to add pounds to your calves, L356 is the one for you!! **HOMO POLLED! Adj WW 788! Top 10% WW! Top 20% YW!**

**JRI TRADE SECRET**  
**253G486**

GENERAL PATTON 213B97 ET  
 MS SECRET BLEND 253E386 ET

BW	ADJ WW	ADJ YW	WDA
94	788	1372	3.83

**JTHU E729**

WOAK REVOLUTION 08T  
 BNC U8108

CED	BW	WW	YW	MK	TM	CEM	CW	REA	MARB	FPI
12	1.0	80	115	30	69	5	42	.58	.10	78.83



REG: AMGV1568091  
 DOB: 2/10/2023  
 HOMO BLACK • HOMO POLLED • PUREBRED

# L377 EVEREST



L377 is one of the smoother made bulls in the pen with a ton of stretch and length of body! He also comes out of a Dam of Merit, who has a ton of style and a herdsire who is packed full of muscle! He truly is the perfect combination of both!! When you dive into his EPDs, he is the best Carcass EPD bull in the pen with every stat being in the TOP 15-20% of the breed. So, not only is "Everest" going to be able to make nice females, he is also going to help make great feeder cattle that will grade well in the end market! Don't miss your chance on a great bull like him! **HOMO BLACK! HOMO POLLED! Top 15% REA! TOP 20% MB!**

**CERG EFFECTIVE 990G**

PHG EMINENCE E02  
 CERG MISS LOCO 6113D

BW	ADJ WW	ADJ YW	WDA
89	688	1158	3.23

**VDH F818**

DDGR POWER PLAY 143A  
 VDH B447

CED	BW	WW	YW	MK	TM	CEM	CW	REA	MARB	FPI
9	1.6	72	103	22	58	5	39	.86	.30	76.86

REG: AMGV1568106  
 DOB: 1/1/2023  
 RED • HOMO POLLED • PUREBRED

# L305 BIG HORN



As you can see, the depth of quality of bulls this year might just be the best group we have ever raised from top to bottom! L305 comes with the perfect amount of performance while also keeping the calving ease. He is out of a first calf heifer that weaned off at 758lbs!! I have no doubt that he is going to add pounds to your calves at weaning time which in return will put more money in your pocket!! Don't miss your chance to check him out on February 3rd at our Annual Open House! **HOMO POLLED! Top 15% WW! Top 20% YW!**

**JRI TRADE SECRET  
 253G486**

JRI GENERAL PATTON 213B97 ET  
 JRI MS SECRET BLEND 253E386 ET

BW	ADJ WW	ADJ YW	WDA
81	787	1277	3.31

**THUL J108**

CKS LEGACY E64  
 THUL G935

CED	BW	WW	YW	MK	TM	CEM	CW	REA	MARB	FPI
16	-1.9	78	115	28	67	8	29	.58	-0.13	75.90



REG: AMGV1568137  
 DOB: 1/24/2023  
 BLACK • POLLED • PUREBRED

# L344 SHASTA



"L344" is definitely one of my favorite late bloomers in the pen! He is a heifer bull but as of lately has put on the pounds to make him a versatile option, allowing you to put him on your heifers or cows and sleep easy at night! As you can tell, he really exploded after weaning to get to his 1217lb adjusted yearling weight. He simply just puts everything together nicely! "Shasta" is strong boned and comes with a pedigree to back him up! Out of a 1st calf heifer, who goes back to one of the top bloodlines on our farm to date! His Grand Dam is a "DAM OF MERIT" while his Great Grand Dam is a "DAM OF DISTINCTION" so, you will not find a better bull to make some amazing females for your herd! **POTENTIALLY HOMO POLLED!! Top 15% CD! Top 4% STAY! Top 20% MILK!**

JTHU BILLINGS

JOB DANELL NAPOLEAN 01E  
 HPW MS SHARPAY 901G

BW	ADJ WW	ADJ YW	WDA
84	682	1217	3.09

THUL J132

GUARANTEED IMPACT C55  
 THUL JETTA

CED	BW	WW	YW	MK	TM	CEM	CW	REA	MARB	FPI
15	-0.1	66	83	26	59	8	16	.55	.17	73.40

REG: AMGV1568025  
 DOB: 1/10/2023  
 BLACK • HOMO POLLED • PUREBRED

# L318 TETON



Since this bull was a young calf, he always stood out in the pen as one of the thicker made calving ease bulls I've seen in a long time. "L318" is wide down his top, while keeping the right amount of style through his front end. I believe he is another bull that you could throw in with either heifers or cows and not have to worry about a thing!! He is also in the TOP 5% of the breed for Marbling, which is quite impressive!! **HOMO POLLED!! Adj WW 705! Top 5% MB! Top 10% BW!**

JTHU BILLINGS

JOB DANELL NAPOLEAN 01E  
 HPW MS SHARPAY 901G

BW	ADJ WW	ADJ YW	WDA
83	705	1164	3.23

THUL D619

BNC MR HOJER Y065  
 THUL Y002

CED	BW	WW	YW	MK	TM	CEM	CW	REA	MARB	FPI
13	-2.4	68	92	26	59	7	15	.59	.43	83.60



REG: AMGV1568037  
 DOB: 2/1/2023  
 RED • HOMO POLLED • PUREBRED

# L359 RAINIER



"L359" is one of the most uniform bulls that you will find in the pen! Just looking at his picture, you can hardly find any flaws in this bull as he is put together with a great combination of muscle, depth, and style!! As you have seen, so many of these bulls have great pedigrees behind them and he is no exception!! His Grand Dam "B447" is a multi-year "DAM OF MERIT" and has produced many females that have been retained back into our herd. You won't find many bulls like him so, be sure to check him out! **HOMO POLLED! Adj WW 755! Top 20% MB! Top 10% MILK!**

ACGC SECRET  
 INTELLIGENCE 887F

JRI SECRET COMPONENT 285A393  
 ACGC MISS DEMI 5114C

VDH H013

GUARANTEED IMPACT C55  
 VDH B447

BW	ADJ WW	ADJ YW	WDA
89	755	1200	3.25

CED	BW	WW	YW	MK	TM	CEM	CW	REA	MARB	FPI
13	0.5	69	93	28	62	8	36	.60	.30	77.37

REG: AMGV1568152  
 DOB: 2/5/2023  
 HOMO BLACK • HOMO POLLED • PUREBRED

# L369 SUPERIOR



L369 may be the last bull in our lineup this year but don't overlook him! He is the true definition of "HEIFER SPECIALIST"! Out of a 1st calf heifer with an Adj WW of 739lbs! Not only will you get the pounds at weaning but you will also not have to worry at night during calving season! He has style and is a moderate made bull! Make sure to check him out on February 3rd! **HOMO BLACK! HOMO POLLED! Top 20% MB! Top 15% MILK!**

JTHU BILLINGS

JOB DANELL NAPOLEAN 01E  
 HPW MS SHARPAY 901G

JTHU J101

HYEK BLACK IMPACT 3960N  
 BNC MISS HOJER G9109

BW	ADJ WW	ADJ YW	WDA
80	739	1214	3.17

CED	BW	WW	YW	MK	TM	CEM	CW	REA	MARB	FPI
12	-1.3	72	101	27	63	5	14	.41	.31	81.16



# THULL GELBVIEH FARM

44327 215TH ST. • OLDHAM, SD 57051



**Duane, Rhonda, Kristyne, Jordan, & Brooke Thull**

Rhonda - 605.860.1237 • Jordan - 605.620.0023

[www.thullgelbviehfarm.com](http://www.thullgelbviehfarm.com)